

Riverbend Newsletter

APRIL 2024



Gallatin Housing Authority's Monthly Newsletter



April Showers Bring May Flowers?

You've probably heard the phrase "April showers bring May flowers." But have you ever thought about what it really means?

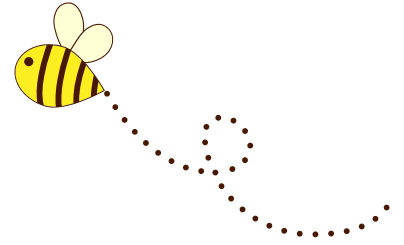
Many believe the rhyme originated in 1557 from the writer Thomas Tusser. In his collection of writings, he called "A Hundred Good Points of Husbandry," he wrote in the April section, "Sweet April showers, do spring May flowers."

Since then, this phrase has only grown more prevalent, being used in other types of writing, a popular 1920s song covered through the decades and many movies as well.

But though the phrase may be popular, is it true? It depends. You have to first look at the type of flower. The health of perennials, which die in the fall and bloom in the spring, are reliant on the rainfall over a stretch of many months. Annuals, which are replanted every year, need rain after they go in the ground.

Scientists point out, though, that there's a much more important factor than rainfall for when you'll start seeing flowers: temperature. When an area starts getting spring-like temperatures, flowers will begin to bloom regardless of how much rain there's been. That's why in warmer places like Texas, it can sometimes feel like "March showers" are actually what bring "April flowers."

No matter how you look at things, the phrase is a reminder that even the most unpleasant of things can eventually bring about something pleasant.



Your Community Team

Michael Bates

Executive Director

LaDonna Tant

Accounting/Operations
Mgr.

Kelvin Vaughn

Maintenance Supervisor

Chad Williams

Property Mgr.

Carthage/South Carthage

Adriana Gonzalez

Property Mgr.

Michelle Swift

Property Mgr.

Macy Sexton

Administrative Assistant

Lobby Hours:

Monday Thru Friday
9:00am - 3:30pm

Contact Directory

Office

615-452-1661

Emergency Maintenance

615-651-2222 or 615-651-
2252


Maintenance Emergency

If you have an emergency and it's during office hours, please call the office before calling maintenance.

615-651-2222 or 615-651-2252

Emergencies Include:

- Suspecting Gas leaks
- Water leaks that may create a safety hazard or property damage
- No heat/air conditioning in concerning weather conditions
- Flooding
- Any situation that may pose danger or property damage.



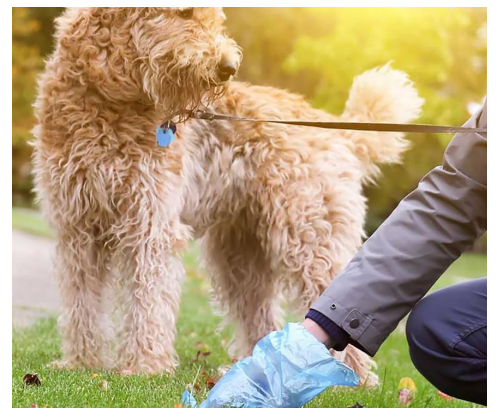
A maintenance emergency is something that requires immediate attention. If left unresolved, the problem could result in injury, threaten one's health, or cause serious property damage.

PETS AND PET WASTE

We are having a major issue with pet waste in the yards. If you have a pet, you signed a pet agreement that states that you are responsible for cleaning this up. If this continues to be a problem, pet fees will increase.

When your pet is outside, they are to be on a leash at all times. They ARE NOT to be tethered and left outside. You must stay with them. When finished with the leash/chain, do not leave it on the ground. These can cause serious damage to mowers/weed eaters. If we pick it up, it will be discarded.

Residents are reminded that there are pet policies and procedures that must be completed before you can have an animal at your apartment - whether they are a pet or you are requesting a support animal. ALL animals must be approved by the Housing Authority before they can be at your apartment. Visiting pets are NOT allowed on the property.



NO INCOME AFFIDAVIT REQUIREMENTS



If you are a tenant with **ZERO** income, you qualify as a credit renter. ALL credit renters are **REQUIRED** to report to the office **MONTHLY** to fill out an income affidavit certifying that they are still without income. Utility Reimbursement Payments cannot be issued without this paperwork.



STAY CONNECTED..

If you live on the streets of Hull, N. Boyers, Small, Owen, 400 Block of Blythe, 400 Block of Small, 500 Block of Blythe, Chambers, Cosco, Yale - Adriana is your Property Manager. She can be reached at 615-452-1661 Ext 12.

If you live on the streets of Blakemore, Lackey, Alexander, Pace, Lake, Trimble, Santa Monica, Chaffin, Womack - Michelle is your Property Manager,. She can be reached at 615-452-1661 Ext. 11

If you live in Carthage or South Carthage, Chad is your Property Manager. Carthage 615-735-1510 M,W,F. South Carthage 615-735-1940 Tues & Thurs. Office Hours 8am-4:30pm on their respective days.

April's Recipe-Perfect Banana Pudding

Ingredients:

- 1 1/3 c. whole milk
- 1 (51 oz) pkg instant vanilla pudding mix
- 1 (14 oz) can sweetened condensed milk
- 3 c heavy cream
- 1 tsp. pure vanilla extract 1 (12 oz) box vanilla wafer cookies
- 4 bananas, sliced into coins 2 tsp. sugar



In a large bowl, combine milk, vanilla pudding mix, and sweetened condensed milk. Whisk thoroughly, breaking up lumps. Then refrigerate for 5 minutes or until set.

In another bowl, combine heavy cream and vanilla. Beat until stiff peaks are formed (2-3 minutes) Set aside half of the mixture for topping the dish. Fold the remaining half into the pudding mixture.

Cover the bottom of a 3-qt dish with vanilla wafers. Top with one-third of the pudding mixture. Cover with another layer of the cookies. Top with an even layer of banana slices. Continue laying the pudding, wafers, and banana slices until you reach the top, ending with a final layer of pudding.

Refrigerate for at least 3 hours, or overnight.

Sweeten the remaining whipped cream. Add sugar to the whipped cream, stirring to combine. Just before serving, dollop on top of the banana pudding, then sprinkle crumbled wafer cookies on top.

April

Sunday	Monday	Tuesday	Wednesday	Thursday	Friday	Saturday
	1	2	3	4	5	6
7	8 	9	10	11	12	13
14	15	16	17	18	19	20
21	22 LAST DAY TO PAY	23	24	25	26	27
28	29	30				

**Community
Clean-Up Day**
Powered by the Sumner County Health Committee

April 6, 2024

Join us for the 3rd annual
Community Clean-Up Day by
helping us pick up
trash around Sumner County!
Sign-up by scanning the
QR code or by visiting:
www.healthysumner.com



10 A.M. TO 5 P.M.
LAST SATURDAY
IN APRIL

**HISTORIC DOWNTOWN
GALLATIN**
EST. 1984

DOWNTOWN
SQUARE

S Q U A R E F E S T

**WILSON
Bank & Trust**

RICH'S

SUMNER PREVENTION
COALITION

SERVPRO
Cleaning. Restoration. Construction.

WELL SKIN
DERMATOLOGY & AESTHETICS



SPRING

WORD SEARCH

E	W	A	J	F	E	L	L	F	J	F	L	W	F	S	T	K	U
F	R	M	J	U	C	D	T	M	H	F	E	E	A	J	O	U	H
C	A	T	A	F	R	U	L	L	I	T	M	S	O	W	Z	J	U
X	I	T	D	J	O	X	F	T	S	H	X	P	G	O	M	I	M
X	N	N	X	R	E	O	O	E	L	X	Z	D	P	R	X	K	A
W	V	I	P	Q	B	U	N	N	Y	J	C	Y	X	M	R	O	W
S	X	S	D	E	G	G	S	O	D	B	L	G	Q	P	S	F	X
S	U	P	U	D	D	L	E	C	H	I	C	K	R	K	J	R	F
P	L	Y	B	S	P	P	R	I	L	R	I	E	I	A	P	Z	U
S	L	V	Z	D	T	F	L	G	H	V	W	R	U	K	S	R	H
S	B	U	T	T	E	R	F	L	Y	O	V	O	N	P	Z	S	Q
C	U	M	U	B	Y	O	C	Z	L	G	V	S	B	F	K	M	W
B	D	T	L	I	Y	S	N	F	A	N	S	J	P	Y	J	N	H
L	N	V	I	L	U	W	P	V	K	Q	A	A	A	S	I	G	D
O	X	Z	P	M	L	S	D	X	I	W	Z	D	S	F	I	I	B
S	L	V	B	L	J	E	N	Q	T	W	Y	G	J	T	X	I	E
S	L	T	J	V	Z	E	Z	V	E	D	K	W	G	B	E	E	B
O	V	E	C	I	T	D	V	O	H	I	H	J	T	T	I	M	G
M	B	D	M	H	R	S	D	L	W	I	S	M	H	Y	A	K	E
L	A	D	Y	B	U	G	Q	U	B	P	D	G	A	L	H	E	K

BEE
BLOSSOM
BUD
BUNNY

BUTTERFLY
CHICK
EGGS
FLOWER

GRASS
KITE
LADYBUG
LAMB

LILY
NEST
PUDDLE
RAIN

SEEDS
SPROUT
TULIP
WORM

